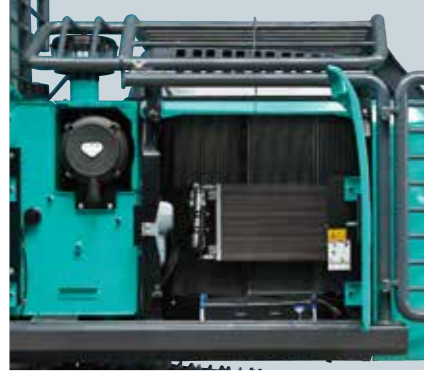


**Comfortable "On the Ground" Maintenance**

The machine layout was designed with easy inspection and maintenance in mind.

Left side



Right side



Simple layout for easy access to radiator and cooling system elements

Fuel filter Fuel filter with built-in water-separator Engine oil filter

**KOMEX**

KOMEX is the remote monitoring system for SK series excavators. When a hydraulic excavator is fitted with this system, data on the machine's operation, such as operating hours, location, fuel consumption, and maintenance status can be obtained remotely.



**SPECIFICATIONS**

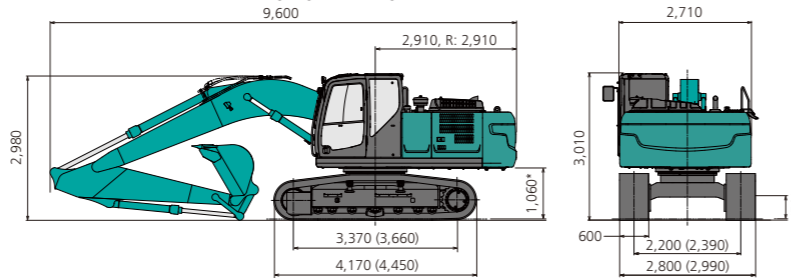
MODEL	SK200XDL	
Type	SK200XDL-10	
<b>PERFORMANCE</b>		
Bucket Capacity (ISO heaped)	m <sup>3</sup>	0.93
Swing Speed	min <sup>-1</sup>	13.3
Travel Speed (high/low)	km/h	6.0/3.6
Gradeability	% (degree)	70 (35)
Bucket Digging Force	kN	143/157*
Arm Crowding Force	kN	102/112*
Drawbar Pulling Force	kN	228
<b>WEIGHT</b>		
Operating Weight	kg	21,800
Ground Pressure	kPa	49
Shoe Width	mm	600
<b>ENGINE</b>		
Model	HINO J05ETG-KSSG	
Type	Direct injection, water-cooled, 4-cycle, 4-cylinder diesel engine with intercooler turbo-charger	
Power Output (ISO 9249)	kW/min <sup>-1</sup>	114/2,000
(ISO 14396)	kW/min <sup>-1</sup>	118/2,000
Max. Torque (ISO 9249)	N·m/min <sup>-1</sup>	569/1,600
(ISO 14396)	N·m/min <sup>-1</sup>	592/1,600
Displacement	L	5.123
Fuel Tank	L	320
<b>HYDRAULIC SYSTEM</b>		
Pump	Two variable displacement pumps + One gear pump	
Max. Discharge Flow	L/min	220 x 2, 21 x 1
Relief Valve Setting (main)/(Power Boost)	MPa	34.3/(37.8)
Swing Motor	Axial piston motor	
Travel Motors	2 x axial-piston, two-step motors	
Hydraulic Oil Tank (system)	L	140 (244)

\*Power Boost engaged

**DIMENSIONS**

\*Without including height of shoe lug

Unit: mm



**WORKING RANGES**

Unit: m

Boom	5.65 m
Arm	Standard
Range	2.94 m
a- Max. digging reach	9.9
b- Max. digging reach at ground level	9.73
c- Max. digging depth	6.7
d- Max. digging height	9.72
e- Max. dumping clearance	6.91
f- Min. dumping clearance	2.43
g- Max. vertical wall digging depth	6.1
h- Min. swing radius	3.55
i- Horizontal digging stroke at ground level	5.27
j- Digging depth for 2.4 m (8') flat bottom	6.52
Bucket capacity ISO heaped m <sup>3</sup>	0.93

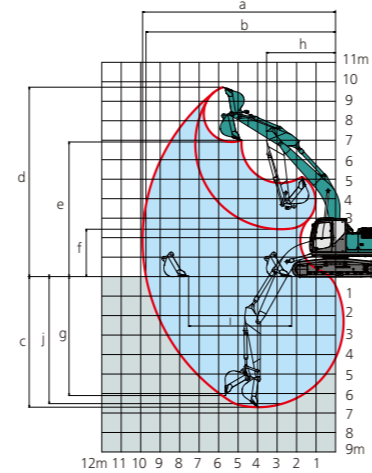
**Digging Force**

Unit: kN

Arm	Standard
Length	2.94 m
Bucket digging force	143 157*
Arm crowding force	102 112*



\*Power Boost engaged



**KOBELCO**

**SK200XDL**

**LOGGING SPECIFICATION**



Note: This catalog may contain attachments and optional equipment that are not available in your area. And it may contain photographs of machines with specifications that differ from those of machines sold in your areas. Please consult your nearest KOBELCO distributor for those items you require. Due to our policy of continuous product improvements all designs and specifications are subject to change without advance notice. Copyright by **KOBELCO CONSTRUCTION MACHINERY CO., LTD.** No part of this catalog may be reproduced in any manner without notice.

**KOBELCO CONSTRUCTION MACHINERY CO., LTD.**

5-15, Kitashinagawa 5-chome, Shinagawa-ku, Tokyo 141-8626 JAPAN  
 Tel: +81 (0) 3-5789-2146 Fax: +81 (0) 3-5789-2135  
[www.kobelco-kenki.co.jp/english\\_index.html](http://www.kobelco-kenki.co.jp/english_index.html)

Inquiries To:

# Power Meets Efficiency

## Designed with Logging in Mind

Delivering even higher productivity while realizing unparalleled fuel-efficiency The Kobelco SK Series hydraulic excavator has a wide range of uses, from sites in the world's urban centers to the mining industry.

The SK200XDL, designed for logging, combines the top-class functionality of the SK series with strengthened structural components, such as the suspension system and other elements, and the durability that forestry sites require. With reinforcing attachments, a tough suspension system capable of traversing stump-covered mountain terrain with ease, and protective guards that cover the main upper body to protect the operator and prevent damage to the power plant, the SK200XDL logging excavator is Kobelco's newest addition that is built to perform effortlessly on the most rugged job sites and is designed specifically for forestry projects.



## Performance in the Toughest Working Conditions

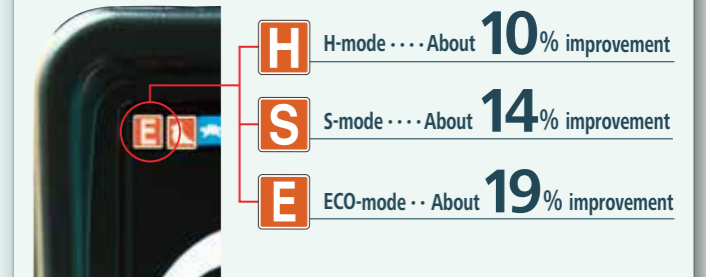
This excavator offers dynamic digging force even as it minimizes fuel consumption rates, achieving class-leading work volume. H-mode, sometimes with an increased torque setting, delivers about 13% greater digging volume.

## In Pursuit of Improved Fuel Efficiency

### Operation Mode

Fuel consumption is lower in H-mode/S-mode/ECO-mode in comparison with the previous model (Generation 8).

#### Compared to previous models



## More Power and Higher Efficiency

The highly efficient hydraulic system minimizes fuel consumption while maximizing power. With nimble movement and superior digging power, this excavator promises to improve your job productivity.

### Superior Digging Performance

Max. Bucket Digging Force	Max. Arm Crowding Force
Normal: <b>143kN</b>	Normal: <b>102kN</b>
With power boost: <b>157kN</b>	With power boost: <b>112kN</b>

## Top Class Traveling Force

Powerful traveling force and drawbar pulling force deliver plenty of speed when climbing slopes or negotiating bad roads, and the agility to change direction swiftly and smoothly.

Drawbar Pulling Force: **228kN**  
Gradeability: **70%**



## Crawlers Built for Unbeatable Durability

The crawlers are built to deliver exceptional durability to take on the roughest terrain. They are equipped with track guides in three places to eliminate de-tracking concerns, reinforced guide frames built to endure heavy impact, and large, double-support outer flanged upper rollers that can withstand powerful vibrations.



Track guides installed in three places



Increased shoe plate thickness



Double-Support outer flange upper rollers



Reinforced guide frame

## Side deck bumpers and protective guards that cover the main upper body

The vehicle comes standard with side deck bumpers and protective guards that cover the cab and the entire power plant to protect the driver and prevent damage to the equipment. These features allow the SK200XDL to pass through densely forested mountain terrain without reservation.



Side deck bumpers

## Featuring an SHD Boom

The SHD boom features stronger plates compared to the HD booms of standard vehicles, which increases the longevity of the parts even under the toughest working conditions.



Protective guards