

ROUGH TERRAIN CRANE

GR-600N

JAPANESE SPECIFICATIONS

GR

OUTLINE	SPEC. NO.
6-section Boom, 2-staged Full Auto Jib H-type Outrigger	GR-600N-1-00101

Control No. GR-600N-1-00101 / JA-01

GR-600N

CRANE SPECIFICATIONS

CRANE CAPACITY

10.0m	Boom	60,000kg	at 2.8m	(14part-line)
16.8m	Boom	30,000kg	at 6.0m	(8part-line)
23.6m	Boom	22,000kg	at 5.5m	(6part-line)
30.4m	Boom	12,500kg	at 9.0m	(4part-line)
37.2m	Boom	11,500kg	at 9.0m	(4part-line)
41.2m	Boom	9,500kg	at 10.0m	(4part-line)
44.0m	Boom	7,500kg	at 11.0m	(4part-line)
8.0m	Jib	3,800kg	at 74 °	(1part-line)
12.7m	Jib	2,600kg	at 72 °	(1part-line)
Single top		4,500kg		(1part-line)

MAX.LIFTING HEIGHT

Boom	45.0m
Jib	58.0m

MAX.WORKING RADIUS

Boom	35.0m (Standard performance)
	38.0m (Over-front special performance)
Jib	39.0m (Standard performance)
	42.1m (Over-front special performance)

BOOM LENGTH

10.0m – 44.0m

BOOM EXTENSION

34.0m

BOOM EXTENSION SPEED

34.0m/134s

JIB LENGTH

8.0m – 12.7m

MAIN WINCH SINGLE LINE WINDING SPEED

125m/min (5th layer)

MAIN WINCH HOOK SPEED

8.9m/min (14 part-line)

MAIN WINCH SINGLE LINE UNWINDING SPEED

<Reference>

Standard	125m/min	(5th layer)
High speed	190m/min	(5th layer)

AUXILIARY WINCH SINGLE LINE WINDING SPEED

110m/min (3th layer)

AUXILIARY WINCH HOOK SPEED

110m/min (1 part-line)

AUXILIARY WINCH SINGLE LINE UNWINDING SPEED

<Reference>

Standard	110m/min	(3th layer)
High speed	165m/min	(3th layer)

BOOM ELEVATION ANGLE

-0 ° ~ 83.5 °

BOOM ELEVATION SPEED

-0 ° ~ 83.5 °/62s

SWING ANGLE

360 °continue

SWING SPEED

2.1min⁻¹ (rpm)

WIRE ROPE

Main Winch:	18mm x 238m (Diameter x Length)
	Spin-resistant wire rope
Auxiliary Winch:	18mm x 123m (Diameter x Length)
	Spin-resistant wire rope

BOOM

6-section hydraulically telescoping type of octagon box construction
(stages 2,3: synchronized; stages 4,5,6: synchronized)

BOOM EXTENSION

3 double-acting hydraulic cylinders
2 wire rope type telescoping device

JIB

Quick-turn type (2-staged type which stores alongside below the base boom section and extendible from under the boom (with 2nd stage hydraulically telescoping))
Hydraulic non-stage offset (5 °/60 °) type

SINGLE TOP

Single sheave. Mounted on main boom head for single line work.

HOIST

Hydraulic motor driven planetary gear reducer
Automatic brake
High-speed unwind function

2 single winches

With flow regulator valve with pressure compensation

BOOM ELEVATION

2 double-acting hydraulic cylinders

With flow regulator valve with pressure compensation

SWING

Hydraulic motor driven planetary gear reducer

Swing bearing

Swing free/lock changeover type

Negative brake

OUTRIGGERS

Fully hydraulic Htype (floats mounted integrally)

Slides and jacks each provided with independent operation device.

Fully extended width 7.6m

Middle extended width 7.2m, 5.5m, 4.1m

Minimum extension width 2.74m

OPERATION METHOD

Hydraulic pilot valve operation

MAX. VERTICAL LOAD CAPACITY OF OUTRIGGER

41.4t

POWER TAKE-OFF

PTO wet multi-plate clutch

HYDRAULIC PUMPS

2 variable piston pumps

3 gear pumps

HYDRAULIC OIL TANK CAPACITY

652 liters

SAFETY DEVICES

Automatic moment limiter (AML)

Swing automatic stop device

Elevation slow down and stop device

Over-winding cutout device

Working area control device

Outrigger extension width detector

Winch drum lock (auxiliary winch)

Level gauge

Hook safety latch

Hydraulic safety valve

Telescopic counterbalance valve

Elevation counterbalance valve

Jib telescopic counterbalance valve

Power tilt counterbalance valve

Jack pilot check valve

Swing lock

EQUIPMENT

Air-conditioner with dehumidifier

Hydraulic oil temperature indication lamp

Radio

Oil cooler

Visual-type winch drum rotation indicator

Operation pedals

ISO arrangement: for telescoping/auxiliary hoisting

TADANO arrangement: for elevating/telescoping

Television (option)

CARRIER SPECIFICATIONS

ENGINE

Model NISSAN 2A-GE13C (with turbo charger and air cooler)
 Type 4-cycle, 6-cylinder, direct-injection, water-cooled diesel engine
 Piston displacement 13.074 liters
 Max. output At the time of traveling 272kW (370PS) at 2,000min⁻¹(rpm)
 Max. torque 1,470N·m(150kgf·m) at 1,100min⁻¹(rpm)

TORQUE CONVERTER

3-element, 1-stage unit (with automatic lock-up mechanism)

TRANSMISSION

Automatic and manual transmission
 Power shift type (wet multi-plate clutch)
 4 forward and 1 reverse speeds (with Hi/Low settings)

REDUCER

Axle dual-ratio reduction

DRIVE

2-wheel drive (4X2) / 4-wheel drive (4X4) selection

FRONT AXLE

Full floating type

REAR AXLE

Full floating type

SUSPENSION

Front Hydro-pneumatic suspension (with hydraulic lock cylinder)

Rear Hydro-pneumatic suspension (with hydraulic lock cylinder)

STEERING

Fully hydraulic power steering
 With reverse steering correction mechanism

BRAKE SYSTEM

Service Brake

Hydro-pneumatic disk brake

Parking Brake

Mechanically operated, internal expanding duo-servo shoe type acting on drum at transmission case rear.

Auxiliary Brake

Hydrodynamic retarder

Electro-pneumatic operated exhaust brake

Auxiliary braking device for operations

FRAME

Welded box-shaped structure

ELECTRIC SYSTEM

24 V DC. 2 batteries of 12V-120Ah

FUEL TANK CAPACITY

300 liters

TIRES

Front 505/95R25 183E ROAD

Rear 505/95R25 183E ROAD

CAB

One-man type

With interior equipment

Rubber mounted type

Fully adjustable seat

(with headrest, armrest and seat belt)

Adjustable handle (tilt, telescoping)

Intermittent type windshield/roof wiper (with washer)

Power window

Side visor

SAFETY DEVICES

Emergency steering device

Suspension lock device

Rear wheel steering lock device

Engine over-run alarm

Overshift prevention device

Parking brake alarm

Mirror for right side of boom (Electric type is optional)

Boom's left side monitor television

EQUIPMENT

Centralized oiling device

Electric mirror

GENERAL DATA

DIMENSIONS

Overall length	12,290mm
Overall width	3,000mm
Overall height	3,740mm
Wheel base	5,300mm
Tread Front	2,420mm
Rear	2,420mm

WEIGHTS

Gross vehicle weight	
Total	39,635kg
Front	19,820kg
Rear	19,815kg

PERFORMANCE

Max. traveling speed	49km/h
Gradeability (tan ⁻¹)	0.57
Min. turning radius	6.44m (4-wheel steering) 11.1m (2-wheel steering)

Note:

This crane is covered by Class D Conditions under the Basic Running Conditions of the Road Traffic Act.

TOTAL RATED LOADS CHART

(1) With outriggers, Standard performance
[BOOM]

Unit: ton

Boom length Working radius	Outriggers fully extended (7.6 m)							-360 °-
	10.0m	16.8m	23.6m	30.4m	37.2m	41.2m	44.0m	
2.8m	60.0	30.0	22.0	12.5				
3.0m	56.5	30.0	22.0	12.5				
3.5m	50.5	30.0	22.0	12.5				
4.0m	46.0	30.0	22.0	12.5	11.5			
4.5m	41.9	30.0	22.0	12.5	11.5	9.5		
5.0m	38.4	30.0	22.0	12.5	11.5	9.5	7.5	
5.5m	35.3	30.0	22.0	12.5	11.5	9.5	7.5	
6.0m	32.5	30.0	21.5	12.5	11.5	9.5	7.5	
6.5m	29.5	28.5	20.2	12.5	11.5	9.5	7.5	
7.0m	26.8	26.0	19.0	12.5	11.5	9.5	7.5	
8.0m		22.0	16.9	12.5	11.5	9.5	7.5	
9.0m		17.5	15.2	12.5	11.5	9.5	7.5	
10.0m		14.2	13.7	12.2	10.7	9.5	7.5	
11.0m		11.7	11.4	11.2	9.9	9.0	7.5	
12.0m		9.8	9.6	10.2	9.0	8.3	7.1	
13.0m		8.4	8.15	9.0	8.2	7.8	6.7	
14.0m			6.95	8.1	7.7	7.2	6.2	
16.0m			5.1	6.15	6.4	6.2	5.5	
18.0m			3.7	4.75	5.3	5.4	4.9	
20.0m			2.7	3.7	4.2	4.45	4.5	
22.0m				2.8	3.35	3.6	3.7	
24.0m				2.1	2.6	2.9	3.05	
26.0m				1.45	2.05	2.3	2.35	
28.0m					1.55	1.7	1.8	
30.0m					1.1	1.35	1.45	
32.0m					0.7	0.95	1.05	
34.0m						0.65	0.75	
35.0m							0.6	
A (°)	0 ~ 83.5				10 ~ 83.5	26 ~ 83.5	31 ~ 83.5	
Standard hook	60 t hook			25 t hook				

A= Boom angle range (for the unladen condition)

[BOOM]

Unit: ton

Boom length Working radius	Outriggers middle extended (7.2 m)					-Over sides-	
	10.0m	16.8m	23.6m	30.4m	37.2m	41.2m	44.0m
2.8m	55.0	30.0	22.0	12.5			
3.0m	55.0	30.0	22.0	12.5			
3.5m	50.0	30.0	22.0	12.5			
4.0m	45.5	30.0	22.0	12.5	11.5		
4.5m	41.5	30.0	22.0	12.5	11.5	9.5	
5.0m	38.0	30.0	22.0	12.5	11.5	9.5	7.5
5.5m	34.9	30.0	22.0	12.5	11.5	9.5	7.5
6.0m	32.0	30.0	21.5	12.5	11.5	9.5	7.5
6.5m	29.5	28.5	20.2	12.5	11.5	9.5	7.5
7.0m	26.8	26.0	19.0	12.5	11.5	9.5	7.5
8.0m		20.2	16.9	12.5	11.5	9.5	7.5
9.0m		15.8	15.2	12.5	11.5	9.5	7.5
10.0m		12.9	12.2	12.2	10.7	9.5	7.5
11.0m		10.6	10.4	11.2	9.9	9.0	7.5
12.0m		8.9	8.6	9.9	9.0	8.3	7.1
13.0m		7.5	7.3	8.5	8.2	7.8	6.7
14.0m			6.15	7.3	7.7	7.2	6.2
16.0m			4.4	5.6	6.25	6.2	5.5
18.0m			3.2	4.3	4.9	5.1	4.9
20.0m			2.25	3.2	3.85	4.05	4.3
22.0m				2.4	3.0	3.25	3.4
24.0m				1.75	2.3	2.55	2.7
26.0m				1.2	1.75	1.95	2.05
28.0m					1.25	1.45	1.6
30.0m					0.85	1.05	1.2
32.0m						0.7	0.85
34.0m							0.5
A (°)	0 ~ 83.5				24 ~ 83.5	30 ~ 83.5	34 ~ 83.5
Standard hook	60 t hook			25 t hook			

A= Boom angle range (for the unladen condition)

[BOOM]

Unit: ton

		Outriggers middle extended (5.5 m)					-Over sides-	
Boom length Working radius	10.0m	16.8m	23.6m	30.4m	37.2m	41.2m	44.0m	
2.8m	50.0	30.0	22.0	12.5				
3.0m	50.0	30.0	22.0	12.5				
3.5m	45.5	30.0	22.0	12.5				
4.0m	40.8	30.0	22.0	12.5	11.5			
4.5m	36.9	30.0	22.0	12.5	11.5	9.5		
5.0m	33.6	30.0	22.0	12.5	11.5	9.5	7.5	
5.5m	26.8	26.3	22.0	12.5	11.5	9.5	7.5	
6.0m	22.5	22.2	21.5	12.5	11.5	9.5	7.5	
6.5m	19.2	19.0	18.8	12.5	11.5	9.5	7.5	
7.0m	16.4	16.3	16.1	12.5	11.5	9.5	7.5	
8.0m		12.5	12.4	12.5	11.5	9.5	7.5	
9.0m		9.9	9.7	10.9	11.5	9.5	7.5	
10.0m		8.0	7.8	8.9	9.6	9.5	7.5	
11.0m		6.6	6.4	7.5	8.1	8.3	7.5	
12.0m		5.5	5.2	6.3	7.0	7.1	7.1	
13.0m		4.5	4.4	5.4	6.0	6.2	6.4	
14.0m			3.6	4.6	5.2	5.4	5.6	
16.0m			2.2	3.25	3.8	4.05	4.25	
18.0m			1.2	2.2	2.85	3.0	3.2	
20.0m				1.4	2.0	2.25	2.4	
22.0m				0.75	1.35	1.6	1.7	
24.0m					0.8	1.05	1.2	
26.0m							0.75	
A (°)	0 ~ 83.5		16 ~ 83.5	33 ~ 83.5	42 ~ 83.5	49 ~ 83.5	50 ~ 83.5	
Standard hook	60 t hook		25 t hook					

A= Boom angle range (for the unladen condition)

[BOOM]

Unit: ton

Outriggers middle extended (4.1 m) -Over sides-							
Boom length Working radius	10.0m	16.8m	23.6m	30.4m	37.2m	41.2m	44.0m
2.8m	45.0	30.0	22.0	12.5			
3.0m	45.0	30.0	22.0	12.5			
3.5m	39.6	30.0	22.0	12.5			
4.0m	30.0	30.0	22.0	12.5	11.5		
4.5m	23.8	23.1	22.0	12.5	11.5	9.5	
5.0m	19.5	19.0	18.6	12.5	11.5	9.5	7.5
5.5m	16.5	15.8	15.5	12.5	11.5	9.5	7.5
6.0m	14.0	13.4	13.2	12.5	11.5	9.5	7.5
6.5m	12.0	11.5	11.4	12.5	11.5	9.5	7.5
7.0m	10.6	10.0	9.9	10.9	11.5	9.5	7.5
8.0m		7.6	7.4	8.6	9.15	9.5	7.5
9.0m		6.0	5.8	6.9	7.5	8.0	7.5
10.0m		4.8	4.6	5.65	6.2	6.7	6.7
11.0m		3.8	3.6	4.65	5.2	5.55	5.55
12.0m		3.0	2.8	3.75	4.4	4.65	4.7
13.0m		2.3	2.0	3.1	3.6	3.9	4.0
14.0m			1.3	2.4	3.05	3.25	3.35
16.0m				1.35	2.0	2.2	2.35
18.0m					1.2	1.4	1.55
20.0m							0.95
A(°)	0 ~ 83.5		40 ~ 83.5	49 ~ 83.5	55 ~ 83.5	59 ~ 83.5	60 ~ 83.5
Standard hook	60 t hook		25 t hook				

A= Boom angle range (for the unladen condition)

[BOOM]

Unit: ton

Outriggers minimum extended (2.74 m) -Over sides-							
Boom length Working radius	10.0m	16.8m	23.6m	30.4m	37.2m	41.2m	44.0m
2.8m	25.0	20.0	14.0	10.0			
3.0m	25.0	20.0	14.0	10.0			
3.5m	20.5	19.5	14.0	10.0			
4.0m	16.2	15.5	14.0	10.0	9.0		
4.5m	13.2	12.6	12.2	10.0	9.0	7.5	
5.0m	11.0	10.4	10.1	10.0	9.0	7.5	6.5
5.5m	9.2	8.7	8.4	9.7	9.0	7.5	6.5
6.0m	7.8	7.3	7.1	8.3	9.0	7.5	6.5
6.5m	6.8	6.3	6.1	7.2	8.0	7.5	6.5
7.0m	6.0	5.3	5.2	6.3	7.1	7.0	6.5
8.0m		4.0	3.8	4.85	5.6	5.9	6.1
9.0m		3.0	2.7	3.7	4.4	4.7	4.8
10.0m		2.0	1.7	2.8	3.5	3.75	3.9
11.0m		1.3	1.0	2.1	2.75	2.9	3.1
12.0m		0.6		1.4	2.05	2.25	2.4
13.0m					1.5	1.7	1.85
A (°)	0 ~ 83.5	31 ~ 83.5	53 ~ 83.5	61 ~ 83.5	67 ~ 83.5	70 ~ 83.5	70 ~ 83.5
Standard hook	60 t hook			25 t hook			

A= Boom angle range (for the unladen condition)

[JIB]

Outriggers fully extended (7.6 m)																-360 °
Jib length	44.0 m boom + 8.0 m jib								44.0 m boom + 12.7 m jib							
Offset	5 °		25 °		45 °		60 °		5 °		25 °		45 °		60 °	
Boom angle (°)	Working radius (m)	Total rated loads (t)	Working radius (m)	Total rated loads (t)	Working radius (m)	Total rated loads (t)	Working radius (m)	Total rated loads (t)	Working radius (m)	Total rated loads (t)	Working radius (m)	Total rated loads (t)	Working radius (m)	Total rated loads (t)	Working radius (m)	Total rated loads (t)
83.5	6.3	3.5	8.8	2.4	10.6	1.6	11.5	1.0	7.4	2.5	11.3	1.4	14.4	0.9	15.9	0.5
76.0	14.2	3.5	16.4	2.4	17.6	1.6	18.1	1.0	16.1	2.5	19.5	1.4	21.8	0.9	22.5	0.5
74.0	16.2	3.5	18.2	2.4	19.3	1.6	19.7	1.0	18.3	2.5	21.5	1.4	23.6	0.9	24.2	0.5
72.0	17.9	3.25	20.0	2.4	21.1	1.6	21.3	1.0	20.5	2.5	23.4	1.4	25.4	0.9	25.8	0.5
70.0	19.7	2.9	21.7	2.3	22.7	1.6	22.8	1.0	22.3	2.25	25.2	1.35	27.0	0.9	27.3	0.5
68.0	21.2	2.6	23.3	2.1	24.3	1.6	24.3	1.0	24.2	2.05	26.8	1.3	28.7	0.9	28.9	0.5
65.0	23.7	2.2	25.6	1.85	26.5	1.6	26.5	1.0	26.7	1.75	29.4	1.2	30.9	0.9	31.0	0.5
60.0	27.5	1.7	29.1	1.45	30.0	1.4	30.0	1.0	30.8	1.35	33.4	1.1	34.4	0.9	34.3	0.5
55.0	30.8	1.0	32.4	0.9	33.1	0.8			34.3	0.75	36.8	0.65	37.7	0.6		
53.0	32.1	0.75	33.5	0.65	34.3	0.6			35.7	0.55	38.0	0.45	39.0	0.4		
51.0	33.3	0.5	34.7	0.45	35.4	0.4										
A (°)	50 ~ 83.5				59 ~ 83.5				52 ~ 83.5				59 ~ 83.5			

A= Boom angle range (for the unladen condition)

Outriggers middle extended (7.2 m)																-Over sides-
Jib length	44.0 m boom + 8.0 m jib								44.0 m boom + 12.7 m jib							
Offset	5 °		25 °		45 °		60 °		5 °		25 °		45 °		60 °	
Boom angle (°)	Working radius (m)	Total rated loads (t)	Working radius (m)	Total rated loads (t)	Working radius (m)	Total rated loads (t)	Working radius (m)	Total rated loads (t)	Working radius (m)	Total rated loads (t)	Working radius (m)	Total rated loads (t)	Working radius (m)	Total rated loads (t)	Working radius (m)	Total rated loads (t)
83.5	6.3	3.5	8.8	2.4	10.6	1.6	11.5	1.0	7.4	2.5	11.3	1.4	14.4	0.9	15.9	0.5
76.0	14.2	3.5	16.4	2.4	17.6	1.6	18.1	1.0	16.1	2.5	19.5	1.4	21.8	0.9	22.5	0.5
74.0	16.2	3.5	18.2	2.4	19.3	1.6	19.7	1.0	18.3	2.5	21.5	1.4	23.6	0.9	24.2	0.5
72.0	17.9	3.25	20.0	2.4	21.1	1.6	21.3	1.0	20.5	2.5	23.4	1.4	25.4	0.9	25.8	0.5
70.0	19.7	2.9	21.7	2.3	22.7	1.6	22.8	1.0	22.3	2.25	25.2	1.35	27.0	0.9	27.3	0.5
68.0	21.2	2.6	23.3	2.1	24.3	1.6	24.3	1.0	24.2	2.05	26.8	1.3	28.7	0.9	28.9	0.5
65.0	23.7	2.2	25.6	1.85	26.5	1.6	26.5	1.0	26.7	1.75	29.4	1.2	30.9	0.9	31.0	0.5
60.0	27.3	1.55	29.1	1.35	30.0	1.25	30.0	1.0	30.6	1.2	33.3	1.05	34.4	0.9	34.3	0.5
55.0	30.7	0.75	32.3	0.65	32.9	0.6			34.1	0.5	36.7	0.45	37.6	0.4		
53.0	31.9	0.5	33.4	0.4	34.1	0.38										
A (°)	52 ~ 83.5				59 ~ 83.5				54 ~ 83.5				59 ~ 83.5			

A= Boom angle range (for the unladen condition)

Outriggers middle extended (5.5 m)																-Over sides-
Jib length	44.0 m boom + 8.0 m jib								44.0 m boom + 12.7 m jib							
Offset	5 °		25 °		45 °		60 °		5 °		25 °		45 °		60 °	
Boom angle (°)	Working radius (m)	Total rated loads (t)	Working radius (m)	Total rated loads (t)	Working radius (m)	Total rated loads (t)	Working radius (m)	Total rated loads (t)	Working radius (m)	Total rated loads (t)	Working radius (m)	Total rated loads (t)	Working radius (m)	Total rated loads (t)	Working radius (m)	Total rated loads (t)
83.5	6.3	3.5	8.8	2.4	10.6	1.6	11.5	1.0	7.4	2.5	11.3	1.4	14.4	0.9	15.9	0.5
76.0	14.2	3.5	16.4	2.4	17.6	1.6	18.1	1.0	16.1	2.5	19.5	1.4	21.8	0.9	22.5	0.5
74.0	16.2	3.5	18.2	2.4	19.3	1.6	19.7	1.0	18.3	2.5	21.5	1.4	23.6	0.9	24.2	0.5
72.0	17.9	3.25	20.0	2.4	21.1	1.6	21.3	1.0	20.5	2.5	23.4	1.4	25.4	0.9	25.8	0.5
70.0	19.4	2.45	21.6	2.0	22.7	1.6	22.8	1.0	22.1	1.95	25.2	1.35	27.0	0.9	27.3	0.5
68.0	20.9	1.9	23.0	1.6	24.1	1.4	24.3	1.0	23.7	1.45	26.7	1.2	28.7	0.9	28.9	0.5
65.0	23.0	1.15	25.0	0.95	26.1	0.85	26.4	0.85	25.9	0.85	29.2	0.7	30.8	0.65	31.0	0.5
62.0	25.2	0.6	27.0	0.45	28.0	0.4	28.3	0.4								
A (°)	61 ~ 83.5								64 ~ 83.5							

A= Boom angle range (for the unladen condition)

Outriggers middle extended (4.1 m)																-Over sides-
Jib length	44.0 m boom + 8.0 m jib								44.0 m boom + 12.7 m jib							
Offset	5 °		25 °		45 °		60 °		5 °		25 °		45 °		60 °	
Boom angle (°)	Working radius (m)	Total rated loads (t)	Working radius (m)	Total rated loads (t)	Working radius (m)	Total rated loads (t)	Working radius (m)	Total rated loads (t)	Working radius (m)	Total rated loads (t)	Working radius (m)	Total rated loads (t)	Working radius (m)	Total rated loads (t)	Working radius (m)	Total rated loads (t)
83.5	6.3	3.5	8.8	2.4	10.6	1.6	11.5	1.0	7.4	2.5	11.3	1.4	14.4	0.9	15.9	0.5
78.0	12.1	3.5	14.4	2.4	15.9	1.6	16.4	1.0	13.9	2.5	17.5	1.4	20.0	0.9	20.8	0.5
76.0	14.0	3.3	16.4	2.4	17.6	1.6	18.1	1.0	16.1	2.5	19.5	1.4	21.8	0.9	22.5	0.5
74.0	15.6	2.4	17.9	2.0	19.3	1.6	19.7	1.0	18.0	2.0	21.5	1.4	23.6	0.9	24.2	0.5
72.0	17.2	1.75	19.5	1.45	20.8	1.3	21.3	1.0	19.6	1.45	23.3	1.1	25.4	0.9	25.8	0.5
70.0	18.7	1.1	20.9	1.0	22.2	0.85	22.8	0.85	21.2	0.95	25.0	0.7	26.8	0.6	27.3	0.5
A (°)	69 ~ 83.5								69 ~ 83.5							

A= Boom angle range (for the unladen condition)

[JIB]

Outriggers fully extended (7.6 m) -360°-																
Jib length	41.2 m boom + 8.0 m jib								41.2 m boom + 12.7 m jib							
Offset	5°		25°		45°		60°		5°		25°		45°		60°	
Boom angle (°)	Working radius (m)	Total rated loads (t)	Working radius (m)	Total rated loads (t)	Working radius (m)	Total rated loads (t)	Working radius (m)	Total rated loads (t)	Working radius (m)	Total rated loads (t)	Working radius (m)	Total rated loads (t)	Working radius (m)	Total rated loads (t)	Working radius (m)	Total rated loads (t)
83.5	5.7	3.8	8.3	2.7	10.2	1.8	11.1	1.0	7.0	2.6	10.9	1.4	14.0	0.9	15.5	0.5
76.0	13.0	3.8	15.2	2.7	16.6	1.8	17.2	1.0	14.9	2.6	18.3	1.4	20.8	0.9	21.6	0.5
74.0	14.8	3.8	17.0	2.7	18.2	1.8	18.7	1.0	16.9	2.6	20.1	1.4	22.4	0.9	23.2	0.5
72.0	16.6	3.75	18.7	2.7	19.7	1.8	20.1	1.0	18.9	2.6	21.9	1.4	24.1	0.9	24.7	0.5
70.0	18.3	3.4	20.3	2.65	21.2	1.8	21.5	1.0	20.7	2.4	23.7	1.35	25.7	0.9	26.1	0.5
68.0	19.9	3.05	21.9	2.45	22.6	1.8	22.9	1.0	22.4	2.2	25.4	1.3	27.2	0.9	27.5	0.5
65.0	22.2	2.7	24.0	2.15	24.9	1.8	25.0	1.0	25.1	2.0	27.7	1.2	29.5	0.9	29.6	0.5
60.0	25.8	2.1	27.4	1.8	28.3	1.7	28.3	1.0	29.0	1.65	31.5	1.15	33.0	0.9	32.9	0.5
55.0	29.1	1.25	30.5	1.2	31.1	1.1			32.5	1.05	34.9	0.95	35.9	0.8		
53.0	30.3	1.0	31.6	0.95	32.2	0.9			33.8	0.85	36.1	0.7	36.9	0.6		
50.0	32.0	0.7	33.2	0.6	33.7	0.55			35.7	0.55	37.9	0.45	38.4	0.38		
A (°)	49 ~ 83.5						59 ~ 83.5		49 ~ 83.5						59 ~ 83.5	

A= Boom angle range (for the unladen condition)

Outriggers middle extended (7.2 m) -Over sides-																
Jib length	41.2 m boom + 8.0 m jib								41.2 m boom + 12.7 m jib							
Offset	5°		25°		45°		60°		5°		25°		45°		60°	
Boom angle (°)	Working radius (m)	Total rated loads (t)	Working radius (m)	Total rated loads (t)	Working radius (m)	Total rated loads (t)	Working radius (m)	Total rated loads (t)	Working radius (m)	Total rated loads (t)	Working radius (m)	Total rated loads (t)	Working radius (m)	Total rated loads (t)	Working radius (m)	Total rated loads (t)
83.5	5.7	3.8	8.3	2.7	10.2	1.8	11.1	1.0	7.0	2.6	10.9	1.4	14.0	0.9	15.5	0.5
76.0	13.0	3.8	15.2	2.7	16.6	1.8	17.2	1.0	14.9	2.6	18.3	1.4	20.8	0.9	21.6	0.5
74.0	14.8	3.8	17.0	2.7	18.2	1.8	18.7	1.0	16.9	2.6	20.1	1.4	22.4	0.9	23.2	0.5
72.0	16.6	3.75	18.7	2.7	19.7	1.8	20.1	1.0	18.9	2.6	21.9	1.4	24.1	0.9	24.7	0.5
70.0	18.3	3.4	20.3	2.65	21.2	1.8	21.5	1.0	20.7	2.4	23.7	1.35	25.7	0.9	26.1	0.5
68.0	19.9	3.05	21.9	2.45	22.6	1.8	22.9	1.0	22.4	2.2	25.4	1.3	27.2	0.9	27.5	0.5
65.0	22.2	2.7	24.0	2.15	24.9	1.8	25.0	1.0	25.1	2.0	27.7	1.2	29.5	0.9	29.6	0.5
60.0	25.7	1.8	27.4	1.7	28.3	1.6	28.3	1.0	28.9	1.5	31.5	1.15	33.0	0.9	32.9	0.5
55.0	29.0	1.05	30.4	0.95	31.1	0.85			32.3	0.8	34.8	0.7	35.9	0.65		
53.0	30.2	0.8	31.5	0.7	32.2	0.6			33.6	0.55	36.0	0.5	36.8	0.45		
50.0	31.9	0.45	33.1	0.38												
A (°)	49 ~ 83.5				52 ~ 83.5		59 ~ 83.5		52 ~ 83.5						59 ~ 83.5	

A= Boom angle range (for the unladen condition)

Outriggers middle extended (5.5 m) -Over sides-																
Jib length	41.2 m boom + 8.0 m jib								41.2 m boom + 12.7 m jib							
Offset	5°		25°		45°		60°		5°		25°		45°		60°	
Boom angle (°)	Working radius (m)	Total rated loads (t)	Working radius (m)	Total rated loads (t)	Working radius (m)	Total rated loads (t)	Working radius (m)	Total rated loads (t)	Working radius (m)	Total rated loads (t)	Working radius (m)	Total rated loads (t)	Working radius (m)	Total rated loads (t)	Working radius (m)	Total rated loads (t)
83.5	5.7	3.8	8.3	2.7	10.2	1.8	11.1	1.0	7.0	2.6	10.9	1.4	14.0	0.9	15.5	0.5
76.0	13.0	3.8	15.2	2.7	16.6	1.8	17.2	1.0	14.9	2.6	18.3	1.4	20.8	0.9	21.6	0.5
74.0	14.8	3.8	17.0	2.7	18.2	1.8	18.7	1.0	16.9	2.6	20.1	1.4	22.4	0.9	23.2	0.5
72.0	16.6	3.6	18.7	2.7	19.7	1.8	20.1	1.0	18.9	2.6	21.9	1.4	24.1	0.9	24.7	0.5
70.0	18.2	2.85	20.3	2.4	21.2	1.8	21.5	1.0	20.7	2.3	23.7	1.35	25.7	0.9	26.1	0.5
68.0	19.8	2.2	21.8	1.9	22.6	1.7	22.9	1.0	22.3	1.8	25.4	1.3	27.2	0.9	27.5	0.5
65.0	22.0	1.55	23.8	1.3	24.9	1.15	25.0	1.0	24.5	1.2	27.6	1.0	29.5	0.9	29.6	0.5
62.0	23.8	0.9	25.6	0.75	26.6	0.65	26.9	0.65	26.7	0.65	29.7	0.55	31.3	0.5	31.6	0.45
60.0	25.5	0.55	27.1	0.45	28.0	0.4	28.0	0.4								
A (°)	59 ~ 83.5								61 ~ 83.5							

A= Boom angle range (for the unladen condition)

Outriggers middle extended (4.1 m) -Over sides-																
Jib length	41.2 m boom + 8.0 m jib								41.2 m boom + 12.7 m jib							
Offset	5°		25°		45°		60°		5°		25°		45°		60°	
Boom angle (°)	Working radius (m)	Total rated loads (t)	Working radius (m)	Total rated loads (t)	Working radius (m)	Total rated loads (t)	Working radius (m)	Total rated loads (t)	Working radius (m)	Total rated loads (t)	Working radius (m)	Total rated loads (t)	Working radius (m)	Total rated loads (t)	Working radius (m)	Total rated loads (t)
83.5	5.7	3.8	8.3	2.7	10.2	1.8	11.1	1.0	7.0	2.6	10.9	1.4	14.0	0.9	15.5	0.5
76.0	13.0	3.8	15.2	2.7	16.6	1.8	17.2	1.0	14.9	2.6	18.3	1.4	20.8	0.9	21.6	0.5
74.0	14.6	2.8	16.9	2.2	18.2	1.8	18.7	1.0	16.7	2.25	20.1	1.4	22.4	0.9	23.2	0.5
72.0	16.4	2.0	18.5	1.7	19.7	1.5	20.1	1.0	18.4	1.65	21.9	1.3	24.1	0.9	24.7	0.5
70.0	18.0	1.4	20.0	1.15	21.1	1.1	21.5	1.0	20.0	1.15	23.4	0.85	25.6	0.75	26.1	0.5
A (°)	69 ~ 83.5								69 ~ 83.5							

A= Boom angle range (for the unladen condition)

(2) With outriggers, Over-front special performance
 [BOOM]
 -Over front-

Unit: ton

Boom length Working radius	10.0m	16.8m	23.6m	30.4m	37.2m	41.2m	44.0m	
2.8m	60.0	30.0	22.0	12.5				
3.0m	56.5	30.0	22.0	12.5				
3.5m	50.5	30.0	22.0	12.5				
4.0m	46.0	30.0	22.0	12.5	11.5			
4.5m	41.9	30.0	22.0	12.5	11.5	9.5		
5.0m	38.4	30.0	22.0	12.5	11.5	9.5	7.5	
5.5m	35.3	30.0	22.0	12.5	11.5	9.5	7.5	
6.0m	32.5	30.0	21.5	12.5	11.5	9.5	7.5	
6.5m	29.5	28.5	20.2	12.5	11.5	9.5	7.5	
7.0m	26.8	26.0	19.0	12.5	11.5	9.5	7.5	
8.0m		22.0	16.9	12.5	11.5	9.5	7.5	
9.0m		19.0	15.2	12.5	11.5	9.5	7.5	
10.0m		16.0	13.7	12.2	10.7	9.5	7.5	
11.0m		13.2	12.2	11.2	9.9	9.0	7.5	
12.0m		11.0	11.0	10.2	9.0	8.3	7.1	
13.0m		9.5	9.3	9.2	8.2	7.8	6.7	
14.0m			8.0	8.4	7.7	7.2	6.2	
16.0m			5.9	6.85	6.6	6.2	5.5	
18.0m			4.5	5.35	5.7	5.5	4.9	
20.0m			3.4	4.2	4.75	4.8	4.5	
22.0m				3.35	3.9	4.05	4.05	
24.0m				2.65	3.2	3.3	3.45	
26.0m				2.05	2.6	2.75	2.85	
28.0m					2.1	2.25	2.35	
30.0m					1.65	1.8	1.9	
32.0m					1.25	1.45	1.55	
34.0m					0.9	1.1	1.2	
35.0m						0.95	1.05	
36.0m						0.8	0.9	
38.0m							0.65	
A (°)	0 ~ 83.5						20 ~ 83.5	
Standard hook	60 t hook			25 t hook				

A= Boom angle range (for the unladen condition)

[JIB]
-Over front-

Jib length	44.0 m boom + 8.0 m jib								44.0 m boom + 12.7 m jib							
	5 °		25 °		45 °		60 °		5 °		25 °		45 °		60 °	
Boom angle (°)	Working radius (m)	Total rated loads (t)	Working radius (m)	Total rated loads (t)	Working radius (m)	Total rated loads (t)	Working radius (m)	Total rated loads (t)	Working radius (m)	Total rated loads (t)	Working radius (m)	Total rated loads (t)	Working radius (m)	Total rated loads (t)	Working radius (m)	Total rated loads (t)
83.5	6.3	3.5	8.8	2.4	10.6	1.6	11.5	1.0	7.4	2.5	11.3	1.4	14.4	0.9	15.9	0.5
76.0	14.2	3.5	16.4	2.4	17.6	1.6	18.1	1.0	16.1	2.5	19.5	1.4	21.8	0.9	22.5	0.5
74.0	16.2	3.5	18.2	2.4	19.3	1.6	19.7	1.0	18.3	2.5	21.5	1.4	23.6	0.9	24.2	0.5
72.0	17.9	3.25	20.0	2.4	21.1	1.6	21.3	1.0	20.5	2.5	23.4	1.4	25.4	0.9	25.8	0.5
70.0	19.7	2.9	21.7	2.3	22.7	1.6	22.8	1.0	22.3	2.25	25.2	1.35	27.0	0.9	27.3	0.5
68.0	21.2	2.6	23.3	2.1	24.3	1.6	24.3	1.0	24.2	2.05	26.8	1.3	28.7	0.9	28.9	0.5
65.0	23.7	2.2	25.6	1.85	26.5	1.6	26.5	1.0	26.7	1.75	29.4	1.2	30.9	0.9	31.0	0.5
60.0	27.5	1.7	29.1	1.45	30.0	1.4	30.0	1.0	30.8	1.35	33.4	1.1	34.4	0.9	34.3	0.5
55.0	30.9	1.25	32.5	1.1	33.1	1.1			34.5	1.0	37.0	0.9	37.6	0.8		
53.0	32.4	1.15	33.8	1.0	34.4	1.0			35.9	0.9	38.3	0.8	38.8	0.75		
50.0	34.2	0.9	35.6	0.85	35.9	0.8			37.9	0.75	40.1	0.65	40.5	0.6		
47.0	35.9	0.6	37.2	0.55	37.4	0.55			39.9	0.5	41.9	0.4	42.1	0.4		
45.0	37.1	0.45	38.3	0.4	38.4	0.4										
A (°)	44 ~ 83.5						59 ~ 83.5		46 ~ 83.5						59 ~ 83.5	

A= Boom angle range (for the unladen condition)

Jib length	44.0 m boom + 8.0 m jib								44.0 m boom + 12.7 m jib							
	5 °		25 °		45 °		60 °		5 °		25 °		45 °		60 °	
Boom angle (°)	Working radius (m)	Total rated loads (t)	Working radius (m)	Total rated loads (t)	Working radius (m)	Total rated loads (t)	Working radius (m)	Total rated loads (t)	Working radius (m)	Total rated loads (t)	Working radius (m)	Total rated loads (t)	Working radius (m)	Total rated loads (t)	Working radius (m)	Total rated loads (t)
83.5	5.7	3.8	8.3	2.7	10.2	1.8	11.1	1.0	7.0	2.6	10.9	1.4	14.0	0.9	15.5	0.5
76.0	13.0	3.8	15.2	2.7	16.6	1.8	17.2	1.0	14.9	2.6	18.3	1.4	20.8	0.9	21.6	0.5
74.0	14.8	3.8	17.0	2.7	18.2	1.8	18.7	1.0	16.9	2.6	20.1	1.4	22.4	0.9	23.2	0.5
72.0	16.6	3.75	18.7	2.7	19.7	1.8	20.1	1.0	18.9	2.6	21.9	1.4	24.1	0.9	24.7	0.5
70.0	18.3	3.4	20.3	2.65	21.2	1.8	21.5	1.0	20.7	2.4	23.7	1.35	25.7	0.9	26.1	0.5
68.0	19.9	3.05	21.9	2.45	22.6	1.8	22.9	1.0	22.4	2.2	25.4	1.3	27.2	0.9	27.5	0.5
65.0	22.2	2.7	24.0	2.15	24.9	1.8	25.0	1.0	25.1	2.0	27.7	1.2	29.5	0.9	29.6	0.5
60.0	25.8	2.1	27.4	1.8	28.3	1.7	28.3	1.0	29.0	1.65	31.5	1.15	33.0	0.9	32.9	0.5
55.0	29.3	1.7	30.6	1.5	31.2	1.4			32.7	1.3	35.0	1.05	35.9	0.9		
53.0	30.6	1.55	31.8	1.4	32.3	1.3			34.1	1.2	36.3	1.0	37.0	0.9		
50.0	32.1	1.2	33.4	1.1	33.9	1.1			35.9	1.0	38.0	0.85	38.6	0.8		
47.0	33.7	0.85	35.0	0.8	35.3	0.8			37.6	0.7	39.7	0.65	39.9	0.6		
45.0	34.8	0.65	36.0	0.6	36.2	0.6			38.8	0.55	40.7	0.5	40.8	0.45		
A (°)	44 ~ 83.5						59 ~ 83.5		44 ~ 83.5						59 ~ 83.5	

A= Boom angle range (for the unladen condition)

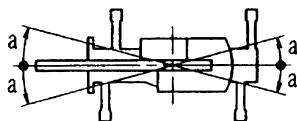
PRECAUTIONS TO BE TAKEN WHEN THE OUTRIGGERS ARE EXTENDED:

1. The total rated loads shown are for the case where the crane is set horizontally on firm level ground. They include the weights of the slings and hooks (main hook: 490kg, 25t hook: 300kg, auxiliary hook: 100kg).
The values above the bold lines are based on the crane strength while those below are based on the crane stability.
2. Since the working radii are based on the actual values including the deflection of the boom, operations should be performed in accordance with the working radii.
3. The total rated load for the jib differs for boom lengths of less than and greater than 41.2 m.
4. Jib operation should be performed on the basis of the boom angle.
The working radii are reference values for the case where a jib is mounted to a 41.2 m or 44.0 m boom.
5. The total rated load for the single top shall be the value obtained by subtracting the weight of the hook mounted on the boom from the total rated load of the boom and must not exceed 4.5t.
6. High-speed unwind function should be performed only when lowering the hook alone and sudden braking operations must be avoided.
7. The table below shows the standard number of part lines for each boom length. When using with other than this number of part lines, the load per line should not exceed 4.29t for the main winch, and 4.5t for the auxiliary winch.

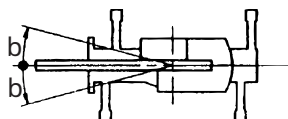
Boom length	10.0 m	16.8 m	23.6 m	30.4 m	37.2 m	41.2 m	44.0 m	Jib/Single top
Number of part lines	14	8	6	4	4	4	4	1

8. The hoisting performance for the "Over sides" range will differ according to the extended width of the outriggers. Operations should be performed in accordance with the performance corresponding to the extended width. Also, although the hoisting performances for the "Over front" and "Over rear" ranges are equivalent to those of the "outriggers fully extended" condition, the front and rear ranges (angle a) will differ according to the width to which the outriggers are extended in the left and right directions.

Extended width	Middle extended (7.2 m)	Middle extended (5.5 m)	Middle extended (4.1 m)	Minimum extended (2.74m)
Angle a °	45	35	25	10



9. The over-front special performance can be set at the combination where the front outrigger is at the maximum extension (7.6 m) and the rear outrigger is at the middle extension (5.5 m) or longer. The working range (angle b) where the over-front special performance can be applied is 50° at the over-front area. In addition, the hanging performance at the over-side and over-rear areas will be the standard performance in accordance with the outrigger extension width.



(3) Without outriggers

Unit: ton

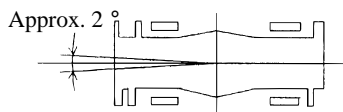
Boom length	Stationary						Travelling at 1.6km/h or less					
	10.0m		16.8m		23.6m		10.0m		16.8m		23.6m	
Working radius	Front	-360 °	Front	-360 °	Front	-360 °	Front	-360 °	Front	-360 °	Front	-360 °
3.0m	20.0	12.5	15.0	10.0			14.5	8.0	10.5	6.5		
3.5m	20.0	12.5	15.0	10.0			14.5	8.0	10.5	6.5		
4.0m	20.0	11.0	15.0	10.0			14.5	8.0	10.5	6.5		
4.5m	18.0	9.0	15.0	8.5	11.0	5.5	12.9	6.8	10.5	6.5	8.0	4.5
5.0m	16.0	7.4	15.0	7.0	11.0	5.5	11.5	5.8	10.5	5.3	8.0	4.1
5.5m	14.3	6.2	14.0	5.7	11.0	5.3	10.3	4.8	10.5	4.4	8.0	3.55
6.0m	12.8	5.2	13.0	4.8	11.0	4.4	9.3	4.0	10.0	3.7	8.0	3.05
6.5m	11.7	4.35	12.0	4.05	10.0	3.7	8.6	3.35	9.3	3.15	8.0	2.55
7.0m	10.8	3.5	11.0	3.4	9.2	3.0	7.9	2.7	8.5	2.7	7.4	1.65
8.0m			9.0	2.3	7.7	2.0			7.0	1.85	6.4	0.95
9.0m			7.0	1.3	6.4	1.0			5.9	1.1	5.4	
10.0m			5.7		5.4				4.8		4.5	
11.0m			4.7		4.5				3.9		3.7	
12.0m			4.0		3.8				3.3		3.1	
13.0m			3.4		3.2				2.8		2.6	
14.0m					2.6						2.2	
16.0m					1.3						1.3	
18.0m					0.5						0.5	
A (°)	0 ~ 76		48 ~ 76	29 ~ 76	61 ~ 76		0 ~ 76		48 ~ 76	29 ~ 76	64 ~ 76	
Standard hook	25 t hook						25 t hook					

PRECAUTIONS TO BE TAKEN WHEN THE OUTRIGGERS ARE NOT USED:

- The total rated loads shown are for the case where the tire air pressure on firm level ground is as specified 800kPa (8.00kgf/cm²) and the suspension-lock cylinder is retracted as much as possible. They include the weights of the slings and hooks (main hook: 490kg, 25t hook: 300kg, auxiliary hook: 100kg).
The values above the bold lines are based on the crane strength while those below are based on the crane stability. The foundation, working conditions, etc. should be taken into consideration for actual work.
- Since the working radii are based on the actual values including the deflection of the boom and the tires, operations should be performed in accordance with the working radii.
- The table below shows the standard number of part lines for each boom length. When using with other than this number of part lines, the load per line should not exceed 4.29t for the main winch, and 4.5t for the auxiliary winch.

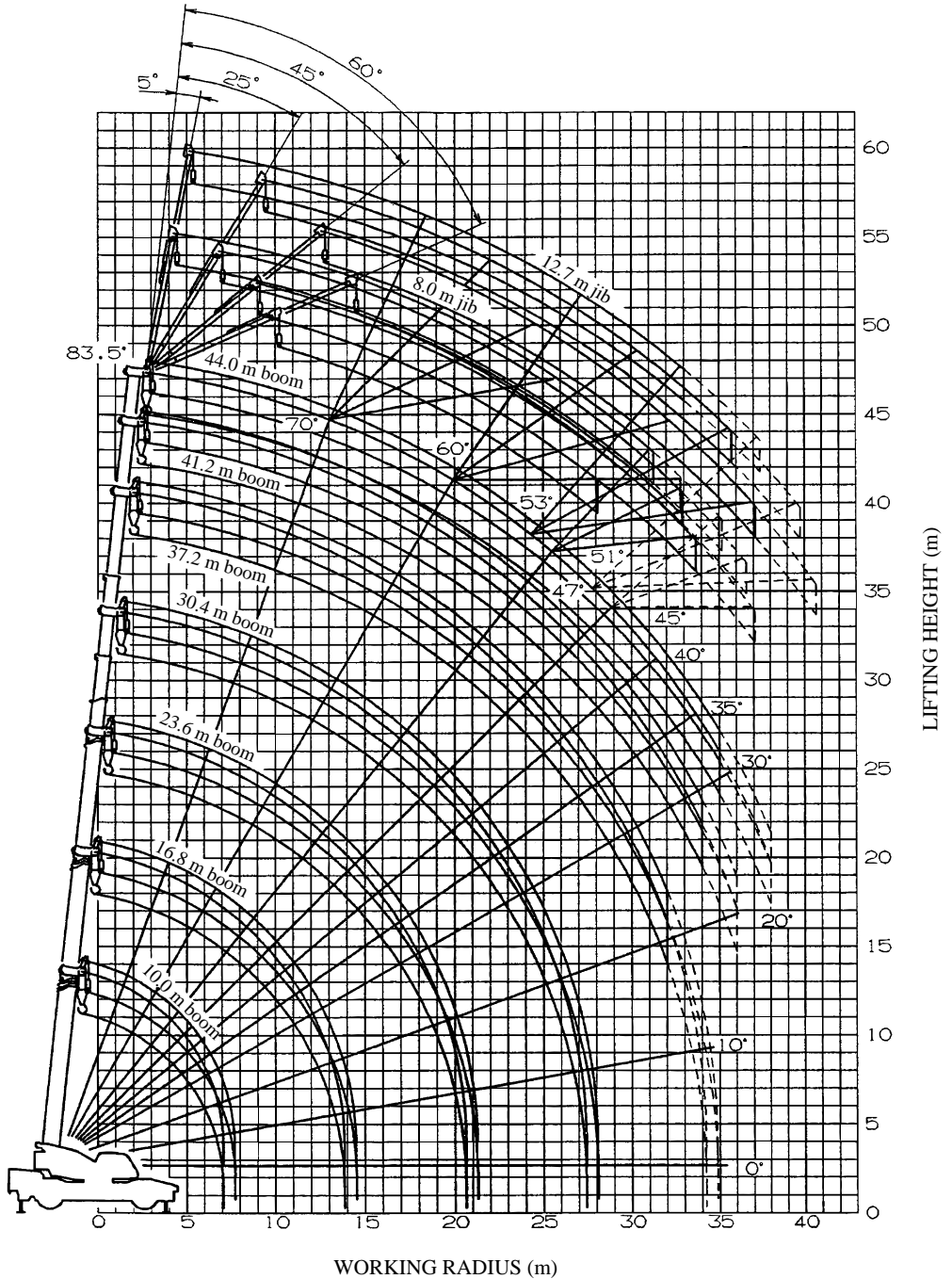
Boom length	10.0 m	16.8 m	23.6 m	Jib/Single top
Number of part lines	6	4	4	1

- "Over front" crane operations should be performed only when the AML "over-front area indicator lamp" is lit. The boom must be kept inside a 2° area over front of the carrier when performing "Over front" crane operations without the outriggers.



- The total rated load for the single top shall be the value obtained by subtracting the weight of the hook mounted on the boom from the total rated load of the boom and must not exceed 4.5t.
- High-speed unwind function should not be performed without outriggers.
Booms over 23.6m in length and jibs should not be used without outriggers.
- The "Drive Mode Selection" switch should be set to "4-wheel / Lo" for travelling while hoisting a load and the shift lever should be set to first.
- When travelling while hoisting a load, the swing brake should be applied, the load should be kept as close to the ground as possible but not touching the ground and the speed should be kept at 1.6km/h or less. In particular, any abrupt steering, starting or braking must be avoided.
- Crane operations should not be performed when travelling while hoisting a load.

WORKING RADIUS - LIFTING HEIGHT



NOTES:

1. The deflection of the boom and the jib are not incorporated in the figure above.
2. The figure above is for the case where the outriggers are fully extended.
3. Broken-line part in the figure above shows the case of the over-front special performance.

DIMENSIONS (1/100)

